



金域旅行社有限公司
GOLDSTATES TRAVEL LTD.



Licence No.351117
www.ftu-travel.com.hk

工 俱 旅 遊



2713 5184



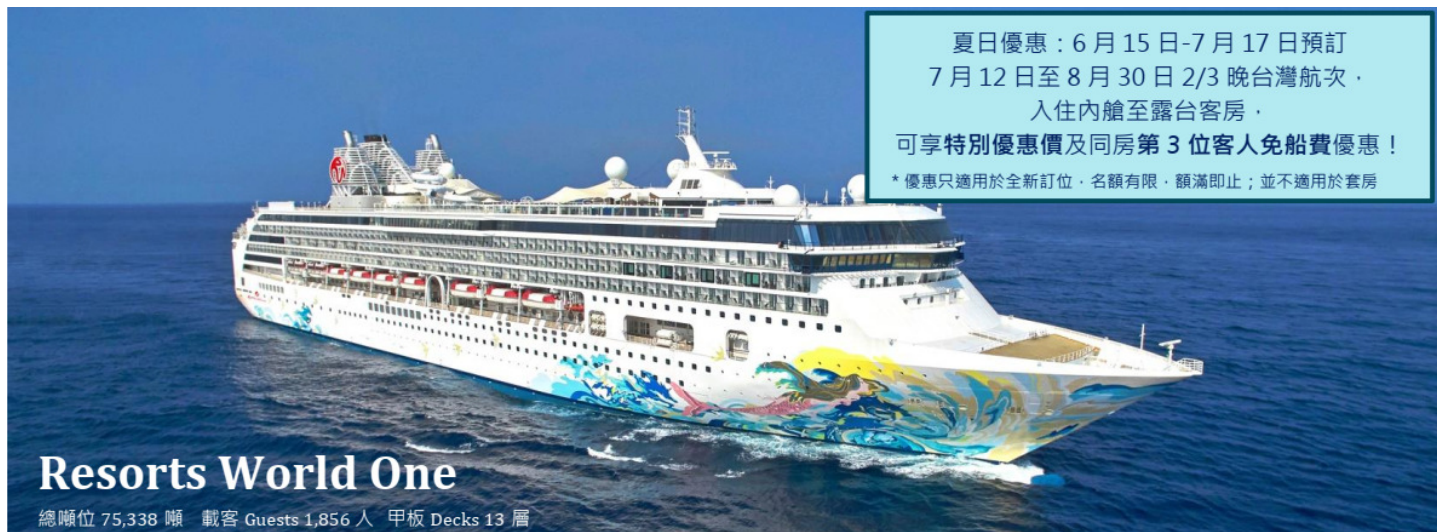
2715 6491



香港九龍土瓜灣馬頭涌道50號工人俱樂部大廈地下

中國銀行: 031-354-10675188

名勝世界壹號 - 2晚/3晚 · 台灣之旅



夏日優惠: 6月15日-7月17日預訂

7月12日至8月30日 2/3 晚台灣航次 ·

入住內艙至露台客房 ·

可享特別優惠價及同房第3位客人免船費優惠!

* 優惠只適用於全新訂位 · 名額有限 · 額滿即止; 並不適用於套房

Resorts World One

總噸位 75,338 噸 載客 Guests 1,856 人 甲板 Decks 13 層

HONG KONG – TAIWAN 台灣之旅

RESORTS WORLD ONE

啟航 2023 年 7-8 月 • 2-3 晚

2 晚高雄之旅 – 星期三啟航

Day	Port	Arrive	Depart
1	香港 Hong Kong		7:00 PM
2	高雄 Kaohsiung	1:00 PM	9:00 PM
3	香港 Hong Kong	3:00 PM	

3 晚高雄/澎湖之旅 – 星期日啟航

Day	Port	Arrive	Depart
1	香港 Hong Kong		5:00 PM
2	高雄 · 台灣 Kaohsiung, Taiwan	11:00 am	9:00 PM
3	澎湖 · 台灣^ Penghu, Taiwan^	7:00 AM	3:00 PM
4	香港 Hong Kong	9:00 AM	

^ 乘坐接駁船登岸 Tendering port

2 晚高雄之旅 – 星期三啟航

2023 啟航日期 Departure Dates	Interior ISS 12 Sqm	Oceanview* OSS* 13 Sqm	Balcony BSS 18 Sqm
12, 19, 26 Jul	HK\$1,819+	HK\$2,659+	HK\$3,639+
2, 9, 16, 23, 30 Aug	HK\$2,599+	HK\$3,799+	HK\$5,199+

3rd / 4th guest in same cabin 同房第 3/4 位價格: 按以上價目 50% (ISS-BSS) 同房第 3 位客人可享免船費優惠 (名額有限 · 額滿即止)

Single Occupancy 單人房收費: 按以上價目 200% (ISS-DPS)

Port Charge 港口費: HK\$500

Onboard Gratuities 船員小費 [Charged to shipboard account 船上戶口收取]: HK\$300 (ISS-BSS) / HK\$400 (DPS)

以每位成人佔半房 HKD 計算 Prices are per person on double occupancy, quoted in HKD

*部分房間為舷窗 Some staterooms are equipped with porthole



金域旅行社有限公司
GOLDSTATES TRAVEL LTD.



Licence No.351117
www.ftu-travel.com.hk

工 俱 旅 遊



2713 5184



2715 6491



香港九龍土瓜灣馬頭涌道50號工人俱樂部大廈地下

中國銀行: 031-354-10675188

3 晚高雄及澎湖 之旅 – 星期日啟航

2023 啟航日期 Departure Dates	Interior ISS 12 Sqm	Oceanview OSS 13 Sqm	Balcony BSS 18 Sqm
16, 23, 30 Jul 6, 13, 20, 27 Aug	HK\$2,719+ HK\$3,399+	HK\$3,999+ HK\$4,999+	HK\$5,439+ HK\$6,799+

3rd / 4th guest in same cabin 同房第 3/4 位價格：按以上價目 50% (ISS-BSS) 同房第 3 位客人可享免船費優惠 (名額有限，額滿即止)

Single Occupancy 單人房收費：按以上價目 200% (ISS-DPS)

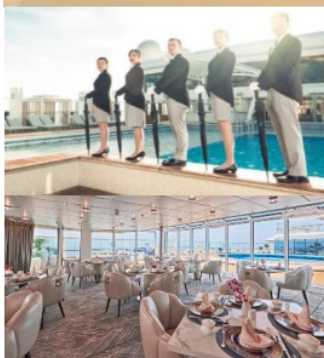
Port Charge 港口費: HK\$600

Onboard Gratuities 船員小費 [Charged to shipboard account 船上戶口收取]: HK\$450 (ISS-BSS) / HK\$600 (DPS)

以每位成人佔半房 HKD 計算 Prices are per person on double occupancy, quoted in HKD

有關登船航遊所需證件，請查閱郵輪公司證件一覽表，及入境要求，資料只供參考，以郵輪公司及有關政府部門公布及安排為準

THE PALACE



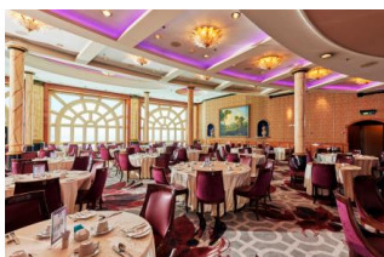
The Palace 套房系列

- 優先登船
Priority check-in and embarkation
- 套房專屬區 (餐廳、甲板及泳池)
Dedicated, private area of the ship with restaurant, sun deck and pool area
- 24 小時管家服務
24-hour butler concierge service
- 劇場表演優先入座
Priority access to production
- 上網套餐
WIFI throughout the cruise

* 以船上安排為準 Subject to change by cruise line

Resorts World One

總噸位 75,338 噸 載客 Guests 1,856 人 甲板 Decks 13 層



Dream Dining Room



Parthenon Pool



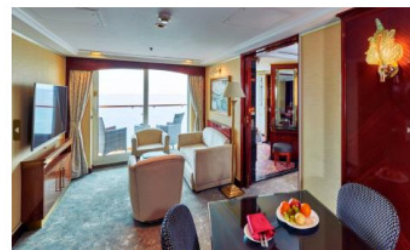
Interior Stateroom



Oceanview Stateroom*



Balcony Stateroom



Palace Suite

* 部分房間為舷窗 Some staterooms are equipped with porthole



金域旅行社有限公司
GOLDSTATES TRAVEL LTD.



Licence No. 351117
www.ftu-travel.com.hk

工 俱 旅 遊



2713 5184



2715 6491



香港九龍土瓜灣馬頭涌道50號工人俱樂部大廈地下

中國銀行: 031-354-10675188

費用包括：

- 郵輪住宿並享用船上美食及娛樂設施

費用不包括 (如適用)

- 遊輪雜費、港口稅、需付費岸上觀光、食品及飲品、郵輪燃油附加費、船上指定保險費、護照簽發 / 簽證費用、旅遊保險、其他個人消費

- 費用以 HK\$ 二人一房每位計算。單人房、三/四人同房或兒童之費用，敬請查詢
- 費用價格只作參考，價格視乎實際供應情況並繳付訂金時為準
- 郵輪上各項收費均以港幣結算
- 訂位均以先到先得為準。訂位確認後，需於 3 個工作天內繳付不可退還之指定金額訂金(或全額費用)，餘下費用必須於載運機構訂下的繳款限期前或當天繳付(以較早之日期計算)
- 全數繳付後，將不獲任何退款，在任何情況下都不能更改、轉讓或退還款項
- 以上費用及條款如有任何更改，恕不另行通知
- 如載運機構調整附加費或其他應繳稅費，乘客須繳付差額。實際金額以載運機構告示發出日期為準
- 郵輪上各收費項目費用如有任何更改，恕不另行通知
- 客人需持有回港日期起計不少於 6 個月以上有效護照及一次或多次(如適用)之到訪國家入境簽證，本公司對客人因個人證件或簽證所產生之任何問題概不負責
- 訂位時的乘客姓名全寫必須與旅遊證件上的全名相同，任何修改將會導致失去原來之訂位、失去原來之優惠價及導致修改費用
- 艙房號碼、層數及位置將於辦理登船手續時由郵輪公司派發，並以郵輪公司之最後安排為準。郵輪公司亦可在不收取額外費用下提升艙房至較高級別，客人不得異議
- 若因天氣惡劣、海面狀況或各種未能預知或「迫不得已理由」(指戰爭、政治動盪、恐怖襲擊、天災、疫症、惡劣天氣、交通工具發生技術問題、載運機構臨時更改班次/時間表、罷工、工業行動、旅遊目的地政府/世界衛生組織發出旅遊警告、香港特區政府發出旅遊紅色/黑色外遊警示，以及其他業界不能控制的不利旅客外遊的情況)而不能停靠或更改行程，顧客同意及接受本公司或郵輪公司均不會作出任何補償，顧客不得異議
- 航程中港口啟航/抵達/停靠時間會按航行情況有所調整/更改/取消，一切以郵輪公司最後安排為準。顧客同意及接受郵輪公司有最終的決定及不會當作違反商品說明條例，亦就此放棄向郵輪公司或本公司追討或索償
- 船票以郵輪公司所頒布的航程合同所發出。有關條款及細則均以刊登之條款為準 <https://www.rwcruises.com/>
- 「香港旅遊業監管局」(TIA)建議客人出發前購買郵輪保險或旅遊綜合保險
- 以上費用及條款如有任何更改，恕不另行通知。其他條款按本公司之「訂購條款與責任細則」為準，詳情請與本公司職員查詢
- 本公司及郵輪公司保留權利隨時更改以上費用、條款及細則。若有任何異議，本公司及郵輪公司保留一切最終決定權

Includes:

- Cruise on board including accommodation, meals, entertainment & access to facilities

Fare Exclusion (If applicable)

- NCCF, Government Fees, Shore Excursions, Priced Food & Beverage items, Gratuities, Cruise Fuel Surcharges, Cruise Insurance Premium, Passport / Travel Visa Fees, Travel Insurance, Any Personal Expenses

- Fares quoted are per person in HK\$ based on double occupancy
- Fares listed on the flyer are for reference only, fares are subject to availability and to be confirmed at the time of a paid reservation.
- Shipboard currency: HKD.
- Reservation is on first come-first serve basis. A non-refundable deposit with indicated amount (or full payment) is required within 3 working days upon confirmation. Balance payment must be received on / before the deadline set by the carrier (whichever earlier).
- Refund for cancellation after full payment will not be entertained. Cruise Fare is non-endorsable, non-reroutable and non-refundable.
- All prices, fees and taxes are subject to change without prior notice.
- Rights are reserves to collect fuel supplements, applicable taxes which imposed by the carrier, even for a full paid reservation. Exact amount will be determined on the date of notification received from the carrier.
- The price for chargeable or priced items onboard are subject to change without prior notice.
- Passengers must have passport with at least 6 months validity on the date of return, and valid visa(s) for visiting the port of call listed in the itinerary. Cruise Company and her booking agencies and representatives will not be liable for any consequences due to visa or passport issues.
- Passengers' full name as shown on travel document is required at the time of booking. Amendment will likely result in fare difference, loss of reservation and / or incurring amendment fees.
- Stateroom assignment is at cruise line's discretion, and on best available basis. Cruise line may reserve the rights offering higher category accommodations at no additional cost.
- Passengers accept full responsibility for all losses and expenses due to "Reasons beyond control". Cruise line and the travel agency will not be liable for any consequences. ("Reasons beyond control" means hostilities, political unrest, natural disasters, pestilences, bad weather, technical problems to transport, changes to the frequency or timetable of any means of conveyance by its operator without advance notice, strikes, industrial action, etc.)
- Cruise line may reserve the rights to make changes on itinerary, timing on all embarkations/disembarkations, and port(s) call cancellation due to weather condition or specific reasons. All of the changes will not be considered as against "The Trade Descriptions Ordinance, Chapter 362, Laws of Hong Kong". Passengers shall not make claim against the cruise line or/and the travel agency for any compensation.
- Cruise ticket issuance is subject to the terms and conditions as stated on the passage contract, thus the terms and condition laid on: <https://www.rwcruises.com/>
- HK Travel Industry Authority recommends passenger to take out the travel insurance before the journey.
- The above Terms and Conditions are subject to change without prior notice. Travel agency reserves the rights to alter the terms & conditions and make final decision in case of any disputes.
- Cruise line and travel agency reserve the right to amend the terms and conditions without prior notice. In case of disputes, Cruise Company and travel agency reserve the right to make the final decision.